



Date: Monday, August 11, 2008

Rev. Date: Thursday, July 2, 2009

Re: Setting up an automatic file feed for an EDS dealership management system

About the IntegraLink file feed tool

The IntegraLink file feed tool, with the aid of a Windows Scheduler task, is able in most cases to automate the process of building and sending several types of data to IntegraLink. The installer will attempt to create 2 windows tasks:

- **EDSIntegraLink** is scheduled to run daily at 1 am. This task will run if the PC is on and logged in, even if the PC is locked.
- **EDSIntegraLink_LogOn** is activated each time the designated user logs on and acts as a safety net for EDSIntegraLink. If the PC was turned off at 1 am or the designated user had logged out, this task will transmit the files at log-on.

Installation requirements

During the installation you will require the following information or materials.

- A Windows PC at the dealership with EDS Query installed and access to the Internet. If possible, this should be a machine that is always turned on.
- An EDS user ID and password that the file feeder can use when accessing information in Query. It is not necessary that a user ID be setup exclusively for our use. An IntegraLink associate may assist with the installation, but it is not necessary at any time to tell us the password.
- The dealership's EDS company number.
- A user ID and Password capable of accessing ftp.integralink.com.
- The dealership's IntegraLink retailer number.
- The e-mail address for our contact at the dealership. The file feeder will occasionally require someone to update the EDS password on file. When this action is required, IntegraLink will send a message to this address.

IntegraLink

4635 Trueman Blvd. Suite 100
Hilliard, OH 43206

t 614.324.7800

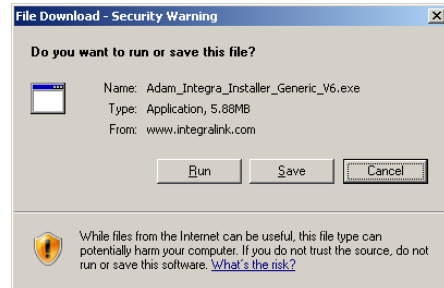
f 614.324-7804

The installation process

Starting the installation process

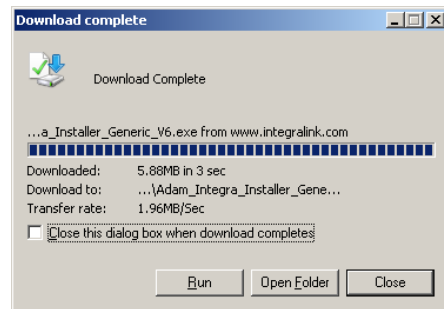
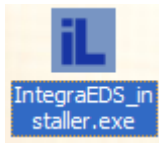
If you haven't already downloaded the installation file, **IntegraEDS_installer.exe** from the IntegraLink website, please do so now. The link to the file is in the e-mail that included this document, or go to this location with your browser: www.IntegraLink.com/downloads/. From there, select the EDS section.

Please select **Save** when receive the security warning window. We recommend that you download the installer to the Desktop, where it will be easy to find.

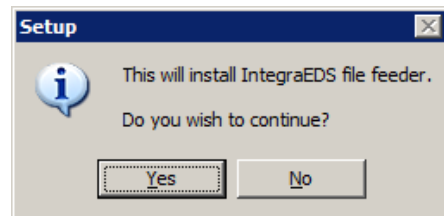


Once the download is complete select **Run** to begin the installation process.

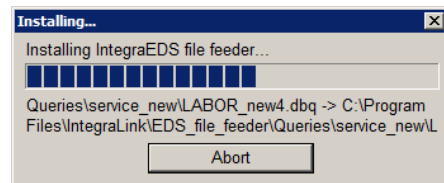
If you decide to perform the installation later, you may also double-click the, **IntegraEDS_installer.exe** icon to start the process.



Select **Yes** to continue the installation.




The installer will extract the required files.



Once the installer has finished extracting files, you will need to enter the following information that an IntegraLink associate will provide:

- IntegraLink Retailer Number
- FTP User ID
- FTP Password
- Encrypt Data for Transfer

Some programs require data be encrypted and transferred to IntegraLink via a secure method. If yes is selected here the installer will install and configure additional software to accomplish this.

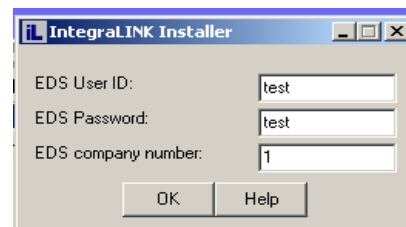


After entering the information, click **OK**.

Next, enter the following information:

- Your EDS User ID
- Your EDS Password
- Your EDS company number

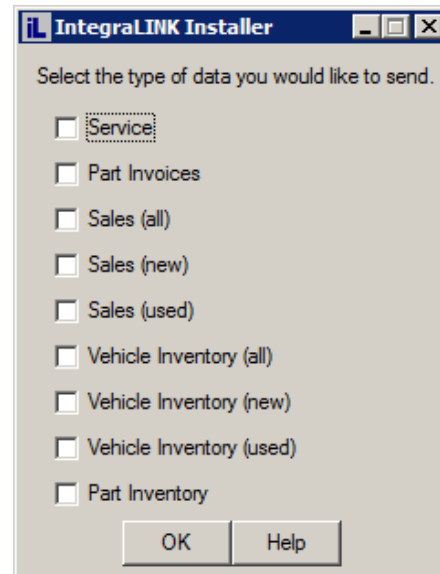
The password entered here will be encrypted and stored; it is not transmitted or supplied to IntegraLink in any way. After entering the information, click **OK**.



Check the types of data you would like to send IntegraLink.

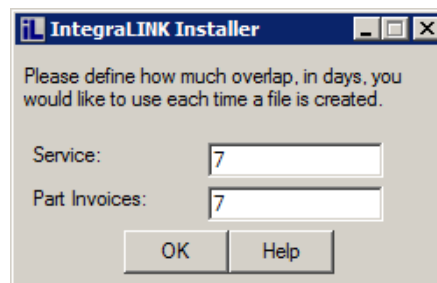
The IntegraLink associate who is assisting you should provide this information.

After entering the information, click **OK**.



Enter how many days of overlap you would like to include in each file. The default value is 7 days and there is no need to modify these values unless instructed to do so by an IntegraLink associate.

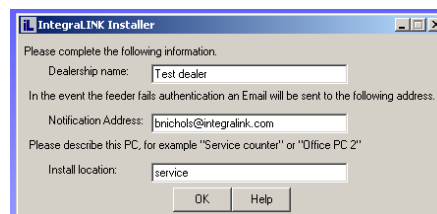
After entering the information, click **OK**.



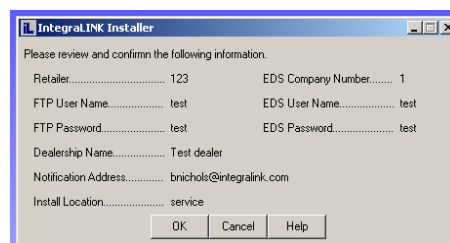
Now enter the following information:

- Dealership name
- Notification Address (dealership contact's e-mail address)
- Install location (description of the PC location)

After entering the information, click **OK**.



Review the information entered during the installation. Select **OK** to continue or **Cancel** to restart the installer and correct errors.



Data encryption

If you chose to encrypt data for transfer, the required components will now be installed and configured. You will see several screens open and close as the process continues and the entire process can take several minutes.

Please do not use the mouse or keyboard during this process. You will see the screen below when the process is complete.

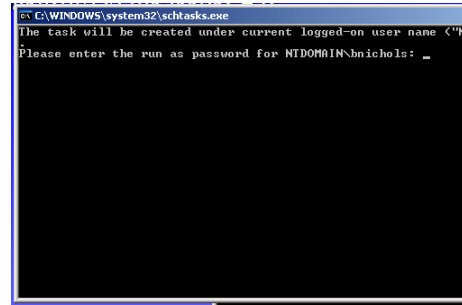
Select **OK** to continue



Setting up the Windows Scheduler

The installer will now create 2 Windows Scheduler tasks to automate the process of building and sending files. The Scheduler requires a password for the task.

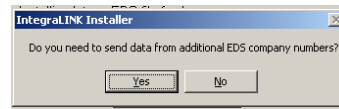
Enter then password associated with the Windows user shown (the user currently logged in) and press the **Enter** key. Two tasks are created so you will need to do this twice.



Multiple companies

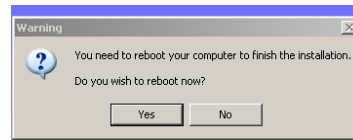
If you are setting up multiple company numbers, select **Yes** and then repeat the previous procedures for each company.

Select **No** when you have set up all the necessary stores.



Once you have finished setting up all the necessary stores you will be asked to reboot the PC.

You may select **Yes** to reboot the PC immediately or **No** to exit the installer and reboot later. **Be sure to reboot the PC before continuing with the next step.**

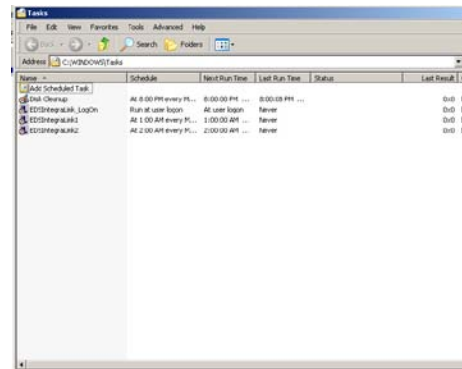


As the installer exits, it will open a window that displays the computer's scheduled tasks. You should see the following entries in the list:

- EDSIntegralLink# (1 for each company number)
- EDSIntegralLink_LogOn

If one of the entries is missing, see the next section for instructions on how to create a Windows Scheduler task manually.

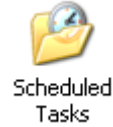
If the tasks are both present, proceed to "Testing the EDS File Feeder."



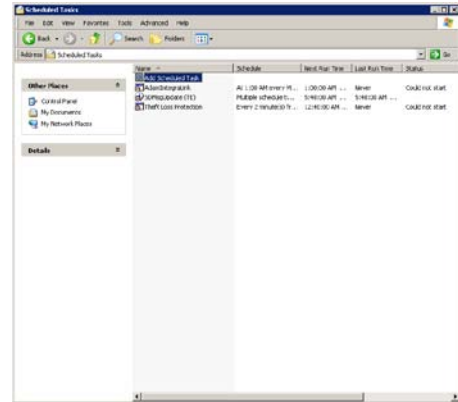
Manually creating Windows Scheduler tasks

Adding the file feeder task

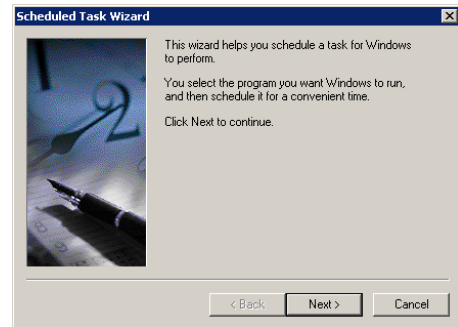
If the Scheduled Tasks window is not open already, you can open it from the Control Panel and choose **Scheduled Tasks**. Start Menu ► Control Panel ► Scheduled Tasks.



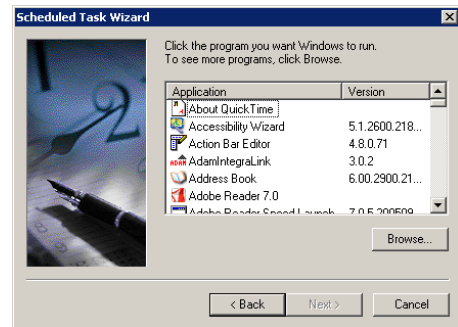
Double-click **Add Scheduled Task**.



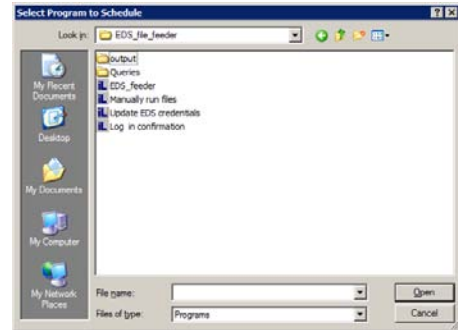
Click **Next**.



Click **Browse**.

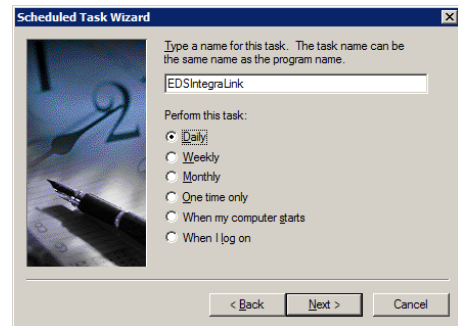


Navigate to C:\Program Files\IntegralLink\EDS_file_feeder.
Select **EDS_feeder.exe**, and click open.



Enter "**EDSIntegralLink#**", where # is one of the company numbers you setup, in the task name field, select **Daily** and click **Next**.

For example, if you are setting up a task for company 1, you would enter "EDSIntegralLink1", without the quotation marks.

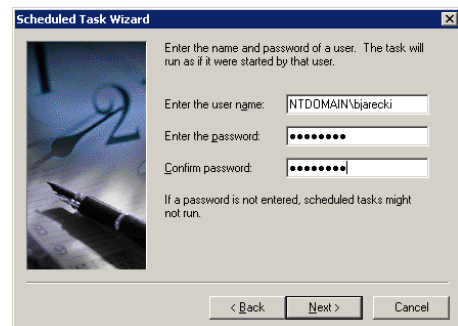


Set the start time to 1:00 am for the first store. If you are installing additional stores, we suggest that you separate the tasks by at least 30 minutes (01:00, 01:30, 02:00, and so on).

Select **Monday, Tuesday, Wednesday, Thursday, and Friday**, then click **Next**.



Enter the Windows password associated with the user displayed and click **Next**.



Select **“Open advanced properties...”** and click **Finish**.

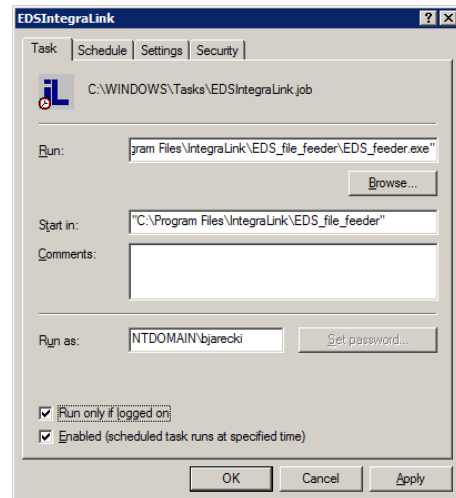


Select **“Run only if logged on”** if the option exists for your version of Windows.

In the box labeled Run, advance the cursor so that it is immediately following the closing quotation mark and then add a space, a dash, and this text: **company=#** where # is the company number you entered in the title.

The end of the line should now look something like this:
_feeder\EDS_feeder.exe" -company=1

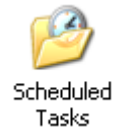
Click **OK**.



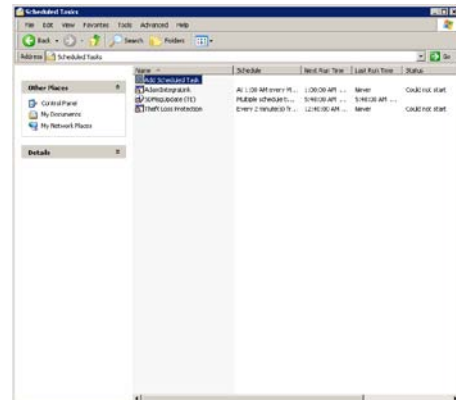
Repeat the steps in this section until you have created a task for each store you set up.

Adding the log-on task

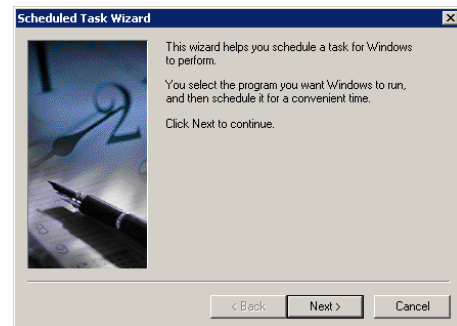
If the Scheduled Tasks window is not open already, you can open it from the Control Panel and choose **Scheduled Tasks**.
Start Menu ► Control Panel ► Scheduled Tasks.



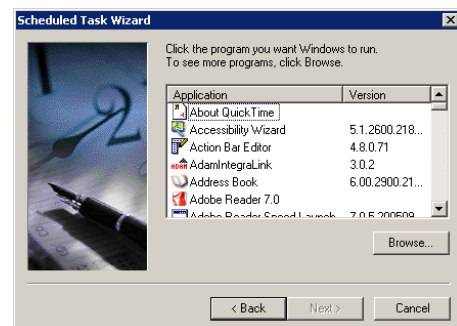
Double-click **Add Scheduled Task**.



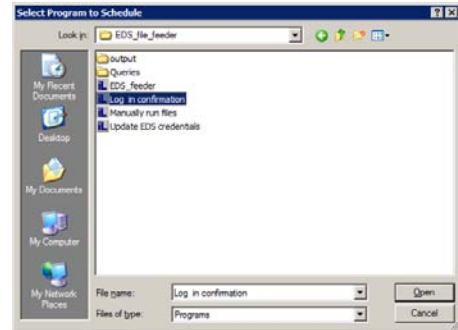
Click **Next**.



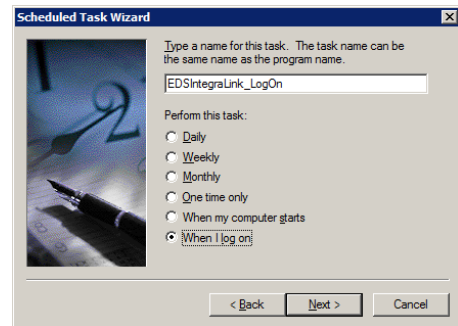
Click **Browse**.



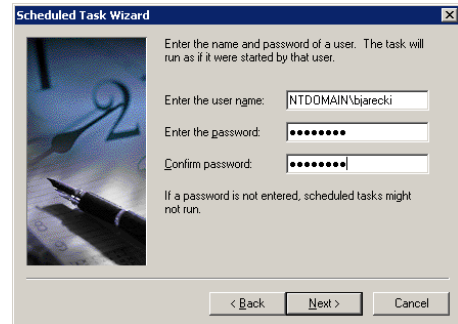
Navigate to C:\Program Files\IntegralLink\EDS_file_feeder.
Select **Log in confirmation.exe**, and click open.



Enter **“EDSIntegraLink_LogOn”** as the task name, select **When I log on**, and click **Next**.



Enter the Windows password associated with the user displayed and click **Next**.



Click **Finish**.

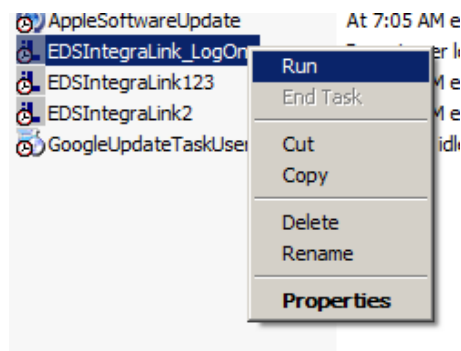


Testing the EDS File Feeder

If the Scheduled Tasks window is not open already, you can open it from the Control Panel and choose **Scheduled Tasks**. Start Menu ► Control Panel ► Scheduled Tasks.



Right-click the EDSIntegralLink_LogOn task and select **Run**.



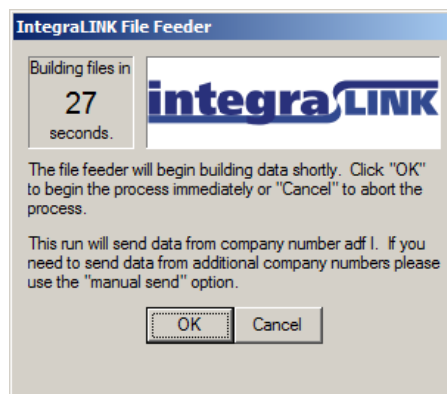
You should see the window at the right appear. Please click **OK** or let the timer expire. This will launch Query and begin building and sending the required files. This process can take many minutes.

When the process is complete, Query will close and the IntegraLink icon, highlighted in red below, will disappear from the system tray.



If you do not see the window shown here or encounter any error during the build process please, contact your IntegraLink representative for assistance.

*If you see this window when you log in, it is a reminder that you may need to send data to IntegraLink. If the overnight tasks did not run because the computer was turned off or you were logged out, please click **OK** to send the files.*



Wrapping up

When you have completed the installation and testing steps, please contact Integralink. An associate will be able to check our FTP site and determine if all the appropriate files have been received. The next step will be to describe how you can send any additional history files that we need.

The Integralink file feed tool will send files overnight Monday through Friday as long as the PC is turned on and a user is logged in. We recommend that you lock the computer, but remain logged on. If you log off or if the machine is shut down overnight, you will be prompted to send files at the next log in.