



Date: Thursday, July 03, 2008

Rev. Date: Thursday, August 06, 2009

Re: Automating Adam data collection (Sales and Vehicle Inventory)

## Automated data collection for Adam dealers (service/parts)

IntegraLink has two automated procedures to poll data from Adam systems: **AdamLink** ("AdamIntegraLink 1") is used to poll vehicle sales and inventory data and **AdamIntegraLink** ("AdamIntegraLink 2") is used to collect service and parts data. This document describes installation and setup of **AdamIntegraLink 1**.

## Installing the application

**AdamIntegraLink 1 should be installed on the dealership's Adam server and it is recommended that it be installed by IntegraLink personnel.** Using the server instead of a workstation ensures that the application will be on the most secure system in the dealership and also ensures that each installation is operating in a known location, which makes providing support faster and easier for the dealership as well as for IntegraLink. In the event a server install is impossible, it is possible to install the software on a workstation in most cases.

In most cases, an IntegraLink technician will log on to the Adam server using Microsoft's Remote Desktop, Citrix, or LogMeIn-Rescue. Dealers may use this document to install the application, but **it is strongly recommended that IntegraLink personnel do the installation.**

## A word about automation

Prior to the release of this document, on or about 7/3/2008, The AdamIntegraLink1 vehicle sales and inventory was not an automated process. Dealers would install the AdamLink interface which would build a file locally, which the dealership could then Email or FTP manually. The install process here is not only appropriate for new installation, but If a dealer was previously sending files manually the installer will detect the prior installation and only add the components necessary to automate the upload process.

### IntegraLink

4635 Trueman Blvd., Suite 100  
Hilliard, OH 43026

t 614.324.7800

f 614.324-7801

## Information to collect before starting

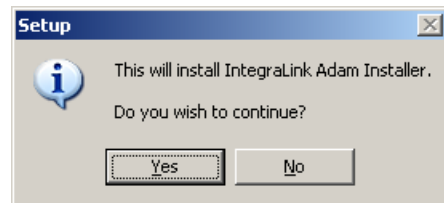
The information you need to collect before connecting to the dealer's Adam server is available in ICap:

- How to connect to the server and any credentials needed (IP address, user name, password, etc.).
- The dealer's IntegraLink retailer number.
- A **one word** name for the dealer. This is for our use in setting up the FTP information. If the dealership name is *Waldo Higgenbotham's Emporium of Motorized Transportation*, for example, you might use *Waldo* or *Higgenbotham*. Shorter is better.
- The user name and password assigned to the dealer for connecting to the IntegraLink FTP site.

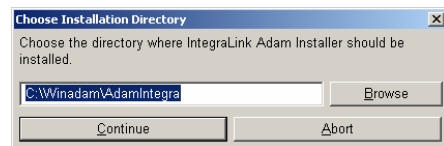
Once you have saved the install file to the local PC double click it to begin the install process.



Confirm you are ready to install.

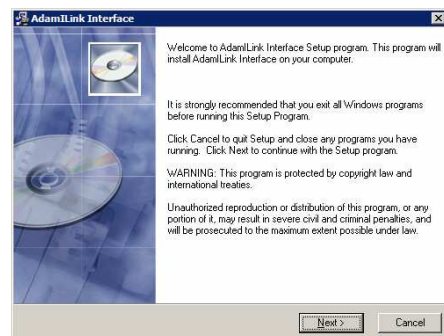


In order to simplify possible future troubleshooting it is recommended you do not modify the default directory.



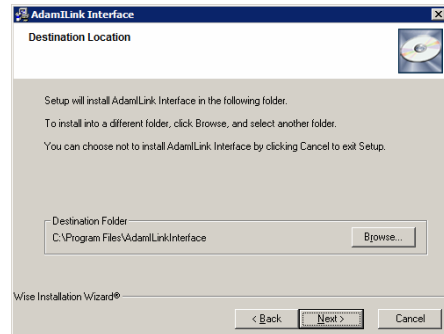
Wait for this screen to appear and click through the standard installation screens.

**\*\*Note this screen may not appear if the Adam software is already installed. Please continue.**



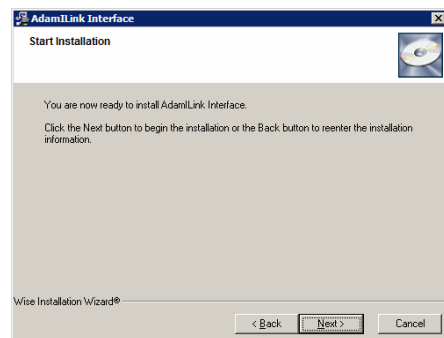
Accept the default location ...

*\*\*Note this screen may not appear if the Adam software is already installed. Please continue.*



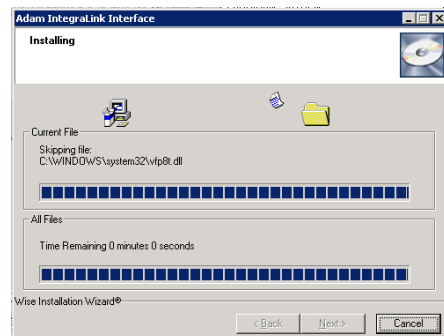
... and start the process.

*\*\*Note this screen may not appear if the Adam software is already installed. Please continue.*



The actual installation takes just a few seconds.

*\*\*Note this screen may not appear if the Adam software is already installed. Please continue.*



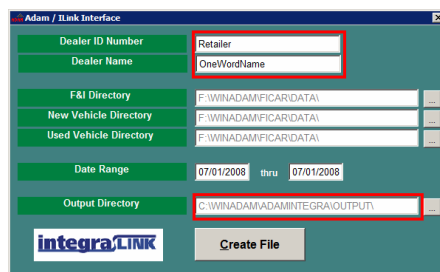
Click **Finish** to acknowledge this phase of the install is complete.

*\*\*Note this screen may not appear if the Adam software is already installed. Please continue.*

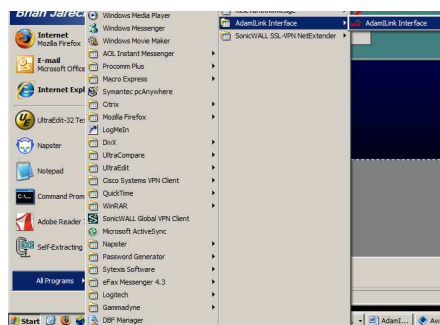


Within a few seconds you should see the window to the right. You will need to enter or confirm the information in the red highlighted boxes. This information should be provided to you by an IntegraLink employee.

- Dealer ID Number: Dealer's IntegraLink retailer number.
- Dealer Name: (NO SPACES though "\_" is acceptable)
- Output Directory: This should already be entered, but please confirm it is set to **C:\WINADAM\ADAMINTEGRA\OUTPUT**



To start the application, if the auto load fails, click on **Start** then programs or all programs. Select **AdamiLink Interface** from the **AdamiLink Interface** menu. Our service application has a similar name (AdamIntegra), so make sure you are selecting the correct application.

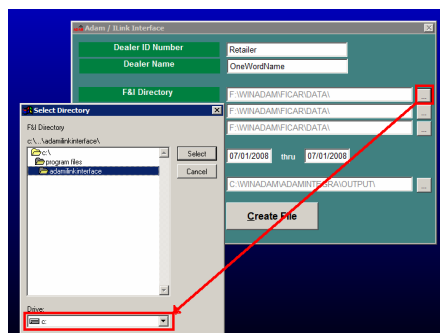


The directory structure has been set based on what Adam uses most frequently and hopefully should not need to be modified. If you receive errors about invalid directories when trying to build a file in the next step these most likely need to be modified. You can do this by clicking the browse buttons and selecting the appropriate directory on the Adam drive usually **F drive**.

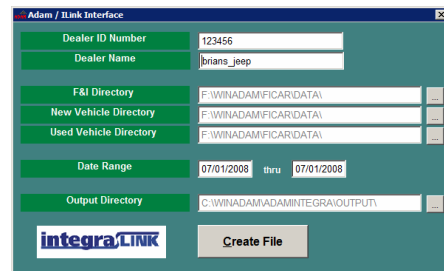
They are usually as follows though can also be adam instead of winadam or something unique to the dealership.

- F&I Directory: \winadam\ficar\data\ or \adam\ficar\.
- New Vehicle Dir: \winadam\ficar\data\ or \adam\ficar\.
- Used Vehicle Dir: \winadam\ficar\data\ or \adam\ficar\.

If you are having issues determining how to set the directories an Integralink employee can assist you.

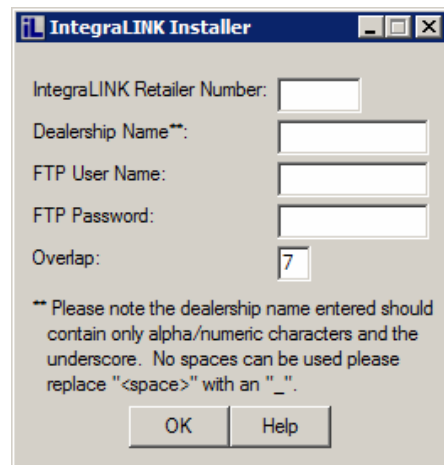


Click the **Create File** button to build the file locally. Once file build is complete the interface window will disappear (this can take a few minutes) and launch the file feeder setup window.

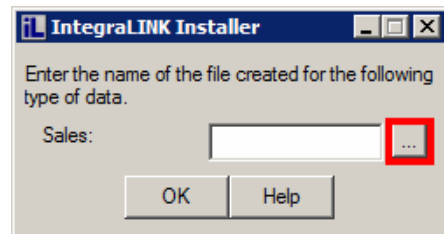


Within a few seconds you should see the window to the right. You will need to enter or confirm the information entered here. This information should be provided to you by an IntegraLink employee.

- IntegraLINK Retailer Number
- Dealer Name: *(NO SPACES though "\_" is acceptable) It is helpful to use the same thing you entered in the prior step*
- FTP User Name:
- FTP Password:
- Overlap: Default is 7 days but this can be modified here if your specific project has different requirements.

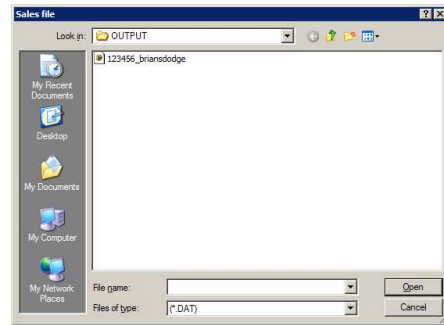


Click the "..." browse button to search for the appropriate file name.

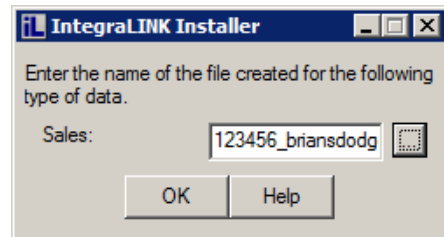


In the browse window you should see only one file that starts with the IntegraLink retailer number. If you do not see this file or you see multiple files and IntegraLink associate can assist you in making the right selection.

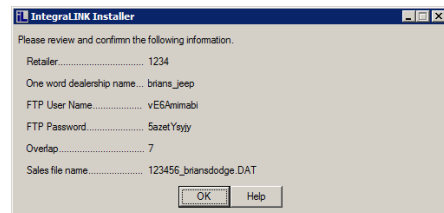
Select or double click the file to enter it.



Select **OK** to continue.

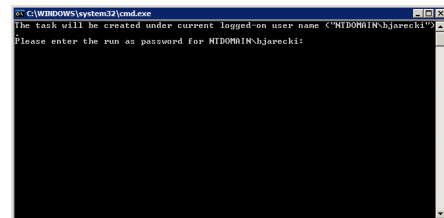


Confirm the information you have entered by selecting **OK**.

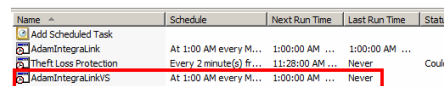


A black DOS screen will pop up asking for the password of the currently logged in user, this is required by Microsoft to create the scheduled task that will activate the file transmission each morning. Enter the password and press "Enter"

The black screen should close and your **Windows Task Scheduler** window should open.



You should see an entry in this window called **AdamIntegralLinkVS** right click on the entry and select run. You should see a black command window open and close once the transmission is complete.



Assuming all has gone well the install is now complete and functioning please contact your IntegraLink representative and have them verify they have received your files.

\*\*\* If the **Windows Task Scheduler** window does not appear or you do not see an entry named

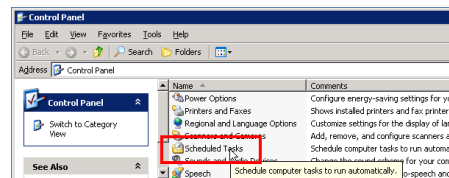
**AdamIntegralLinkVS** please continue to the next section or contact an IntegralLINK associate for assistance.

## Running the applications with the Windows Scheduler

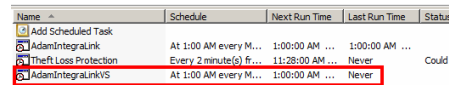
The Windows Scheduler is an application that is built in to Windows. You may start the application using one of these methods if needed:

- From the Control Panel, select **Scheduled Tasks** and then click **Add Scheduled Task**.
- Use the Run command on the Start Menu, type **C:\WINDOWS\Tasks**, press Enter, and then click Add Scheduled Task. (Windows 2000: Type **C:\WINNT\Tasks**.)

Start the **Windows Task Scheduler**.

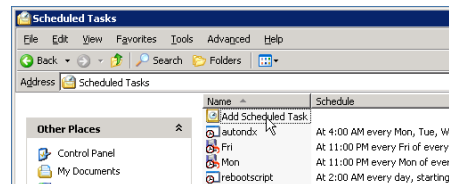


Look for an entry in this window called **AdamIntegralLinkVS** right click on the entry and select run. You should see a black command window open and close once the transmission is complete.

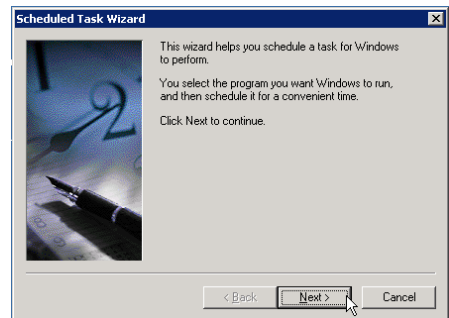


If you do not have an **AdamIntegralLinkVS** entry, please contact an IntegralLINK associate or continue with the steps below to create it.

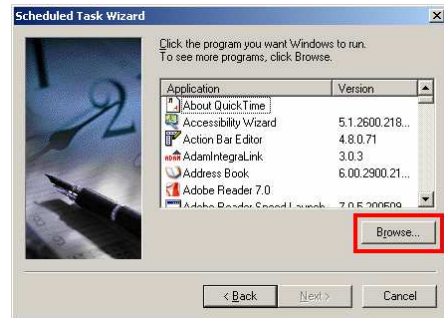
Select **Add Scheduled Task**.



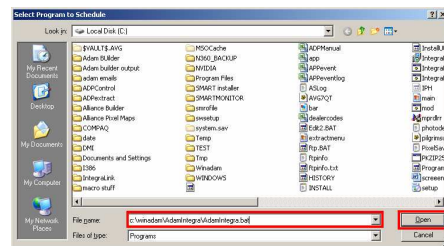
Click Next to start the wizard.



Click on the **Browse** button.

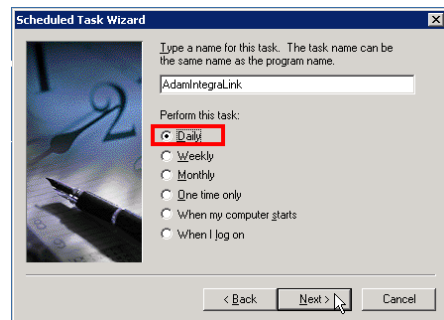


In the file name paste or enter  
**c:\winadam\AdamIntegra\Adam\_VS\_FTP\_Batch.bat**  
Click the **Open** button.

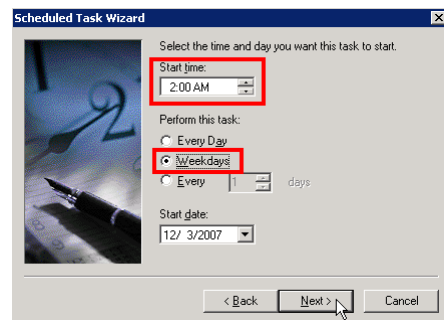


Enter **AdamIntegraLinkVS** as the task name.

Select **Daily** so that the task will run each day.  
Click Next.



Set the **start time** (1am is the standard) and select **weekdays**.  
Click Next.





Enter the password for the user shown twice.  
Click Next.



Click **Finish**.



The task you just added will now be in the list of scheduled tasks. Right click on the entry (AdamIntegralinkVS) and select run. You should see a black command window open and close once the transmission is complete.

Name	Schedule	Next Run Time	Last Run Time	Status
Add Scheduled Task				
AdamIntegralink	At 1:00 AM every M...	1:00:00 AM ...	1:00:00 AM ...	
Theft Loss Protection	Every 2 minute(s) fr...	11:28:00 AM ...	Never	Could
AdamIntegralinkVS	At 1:00 AM every M...	1:00:00 AM ...	Never	

Please contact your integralink representative and have them verify they have received your file